

CHARMILL

RESIDENTIAL

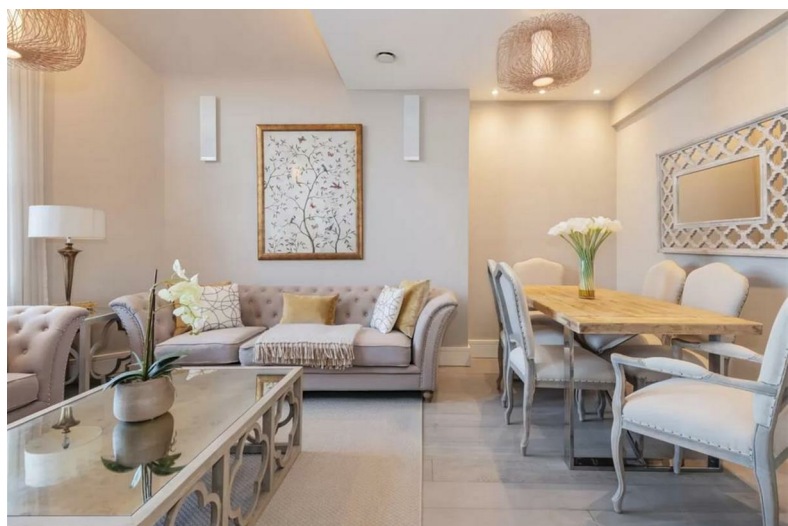


Fitzjohn's Avenue, Hampstead, NW3

£1,846



Fitzjohn's Avenue



Description

An interior designed three/four double bedroom duplex apartment arranged over the upper two floors of a period residence in the heart of Hampstead Village. This beautifully presented and brand newly refurbished home offers well-proportioned and flexible living space featuring a superb reception room, fully kitted eat-in kitchen, principal bedroom with built-in storage, en-suite shower room and access to a charming balcony, two further double bedroom suites, bedroom four/study, further shower room, guest cloakroom and fantastic storage throughout. The property is ideally located for the fashionable cafes and boutiques of Hampstead Village, together with Hampstead Underground Station (Northern Line).

- Four bedrooms
- Split level
- Second & Third floors
- Four bathrooms
- Balcony
- Communal Garden

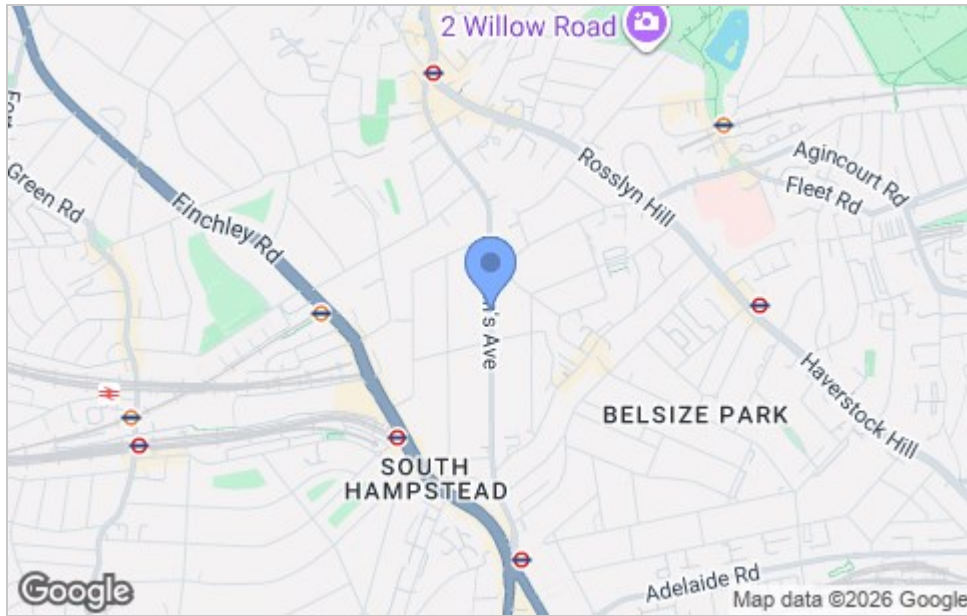




Floor Plan



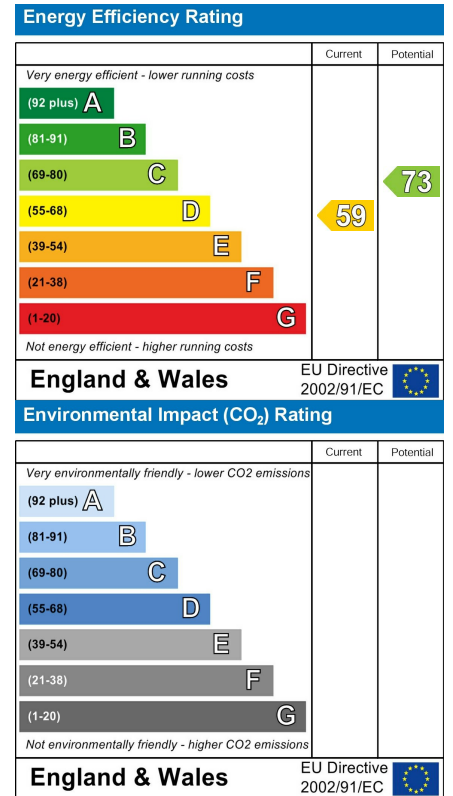
Area Map



Viewing

Please contact us on 020 7046 6275 if you wish to arrange a viewing appointment for this property or require further information.

Energy Efficiency Graph



These particulars, whilst believed to be accurate are set out as a general outline only for guidance and do not constitute any part of an offer or contract. Intending purchasers should not rely on them as statements of representation of fact, but must satisfy themselves by inspection or otherwise as to their accuracy. No person in this firm's employment has the authority to make or give any representation or warranty in respect of the property.

020 7046 6275 • sales@chamillresidential.co.uk • 51 Maida Vale, Little Venice, London W9 1SD
 charmillresidential.co.uk